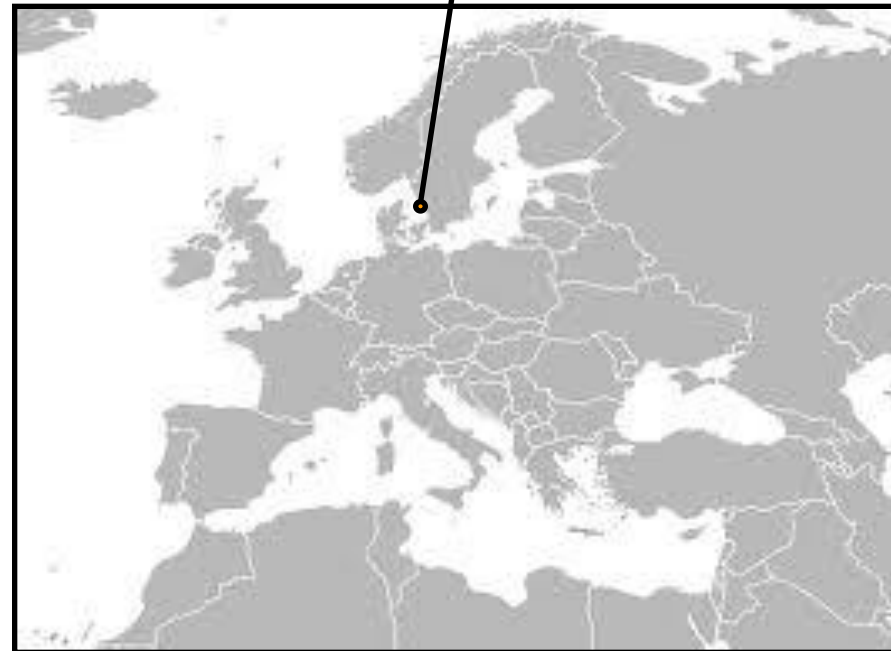


CHALMERS

Est'd 1829



17 Departments

- 2300 Employees
- 1000 Doctoral students
- 1600 Peer reviewed articles

Education

- 12,000 students
- 16 MScEng & NArch prg
- 12 BSc & BScEng prg
- 38 MSc prg
- Ship officers
- Chalmers Professional Education

Eight areas of advance

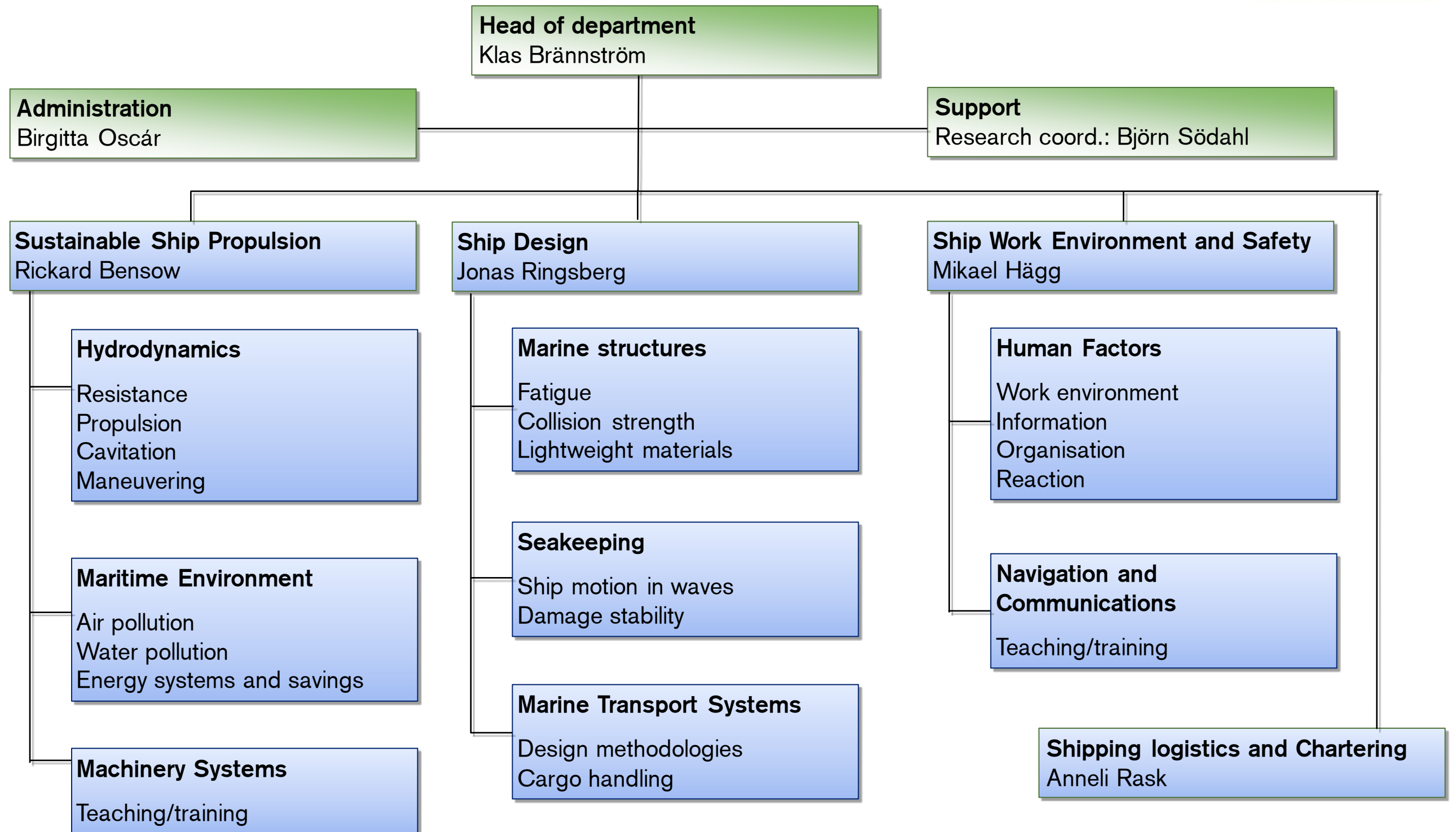
- bring together research, education and innovation
- across departmental boundaries and to
- co-operate with bodies and organisations outside Chalmers.



- Energy
- Information and Communication Technology
- Life Science
- Materials Science
- Nanoscience and Nanotechnology
- Production
- Built Environment
- Transportation

CHALMERS

Shipping and Marine Technology



Maritime Education

Ship officer

75

Ship engineer

60

Shipping and logistics

50

Officers class VII, deck & engine

75

Naval Architecture

20

Nordic Master in
Maritime Engineering

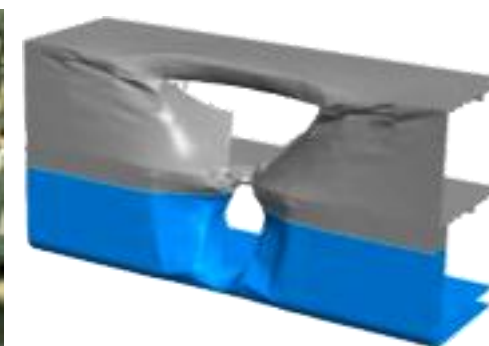
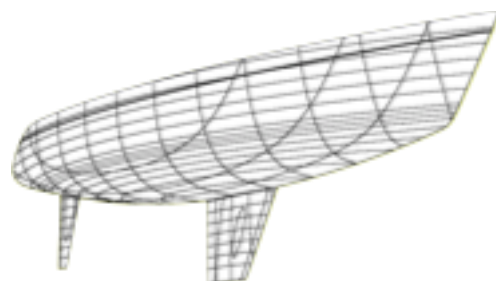
5


Nordic Master in
Maritime Management

30

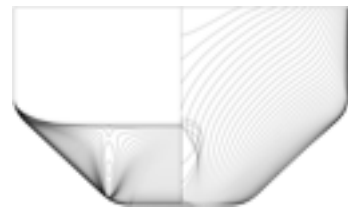
Doctoral education

CHALMERS
professional
EDUCATION



 This image cannot currently be displayed.

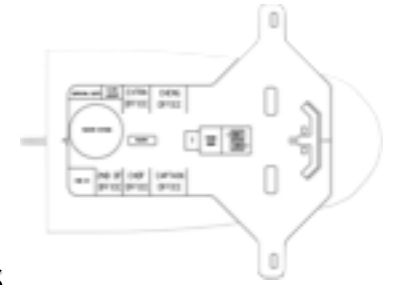
Shipping and Marine Technology



Hydrodynamics
- Resistance and propulsion



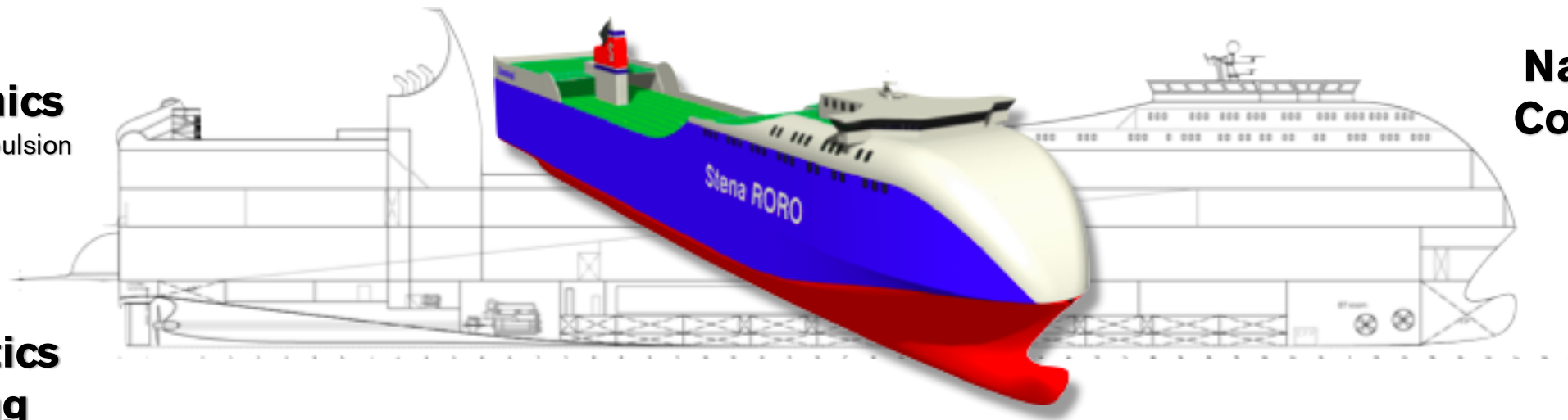
Maritime Environmental Technology
- Emissions, waste treatment and energy



Human Factors
- Safety in ship operations

Machinery Systems
- Operation and maintenance

Navigation and Communication
- Seamanship

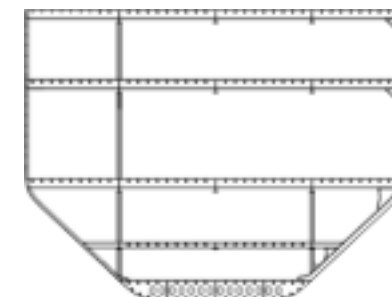
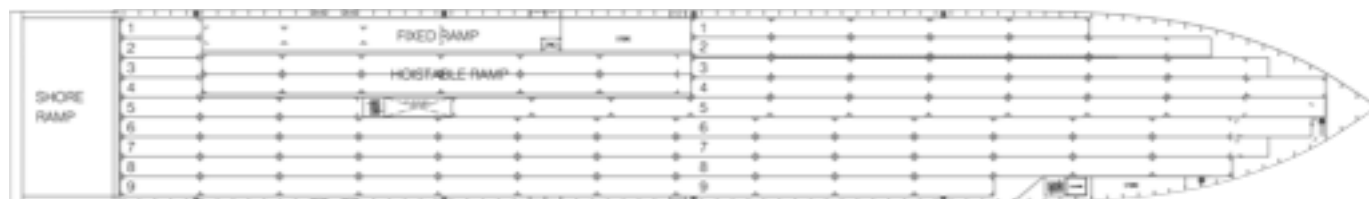


Shipping logistics and Chartering

Marine Transport System
- Cargo handling and freight

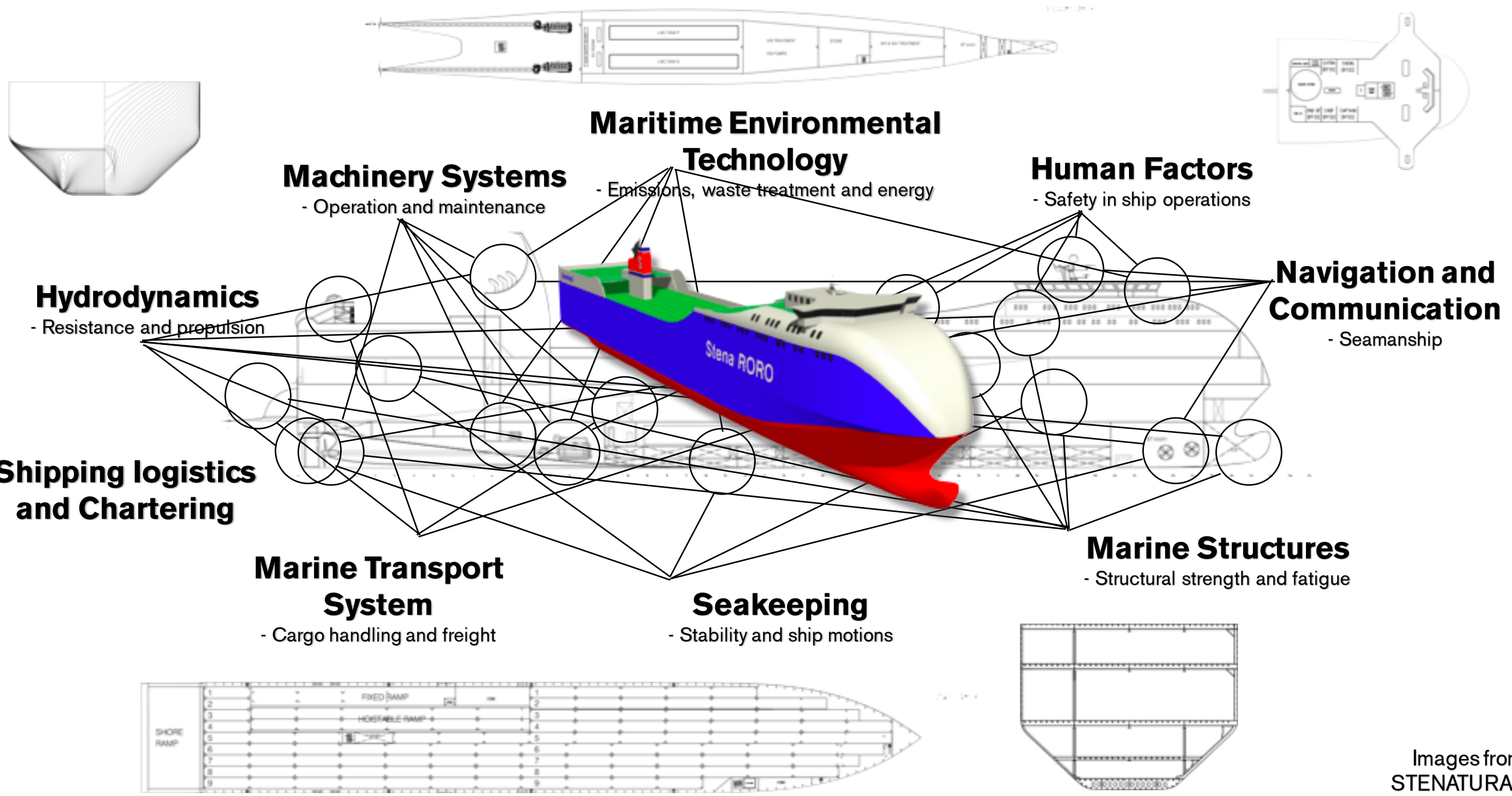
Seakeeping
- Stability and ship motions

Marine Structures
- Structural strength and fatigue



This image cannot currently be displayed.

Shipping and Marine Technology



Maritime Environmental Technology
- Emissions, waste treatment and energy

Machinery Systems
- Operation and maintenance

Human Factors
- Safety in ship operations

Hydrodynamics
- Resistance and propulsion

Navigation and Communication
- Seamanship

Shipping logistics and Chartering

Marine Transport System
- Cargo handling and freight

Seakeeping
- Stability and ship motions

Marine Structures
- Structural strength and fatigue

Interdisciplinary thematic research

Ergo
Ship

Cargo
Ship

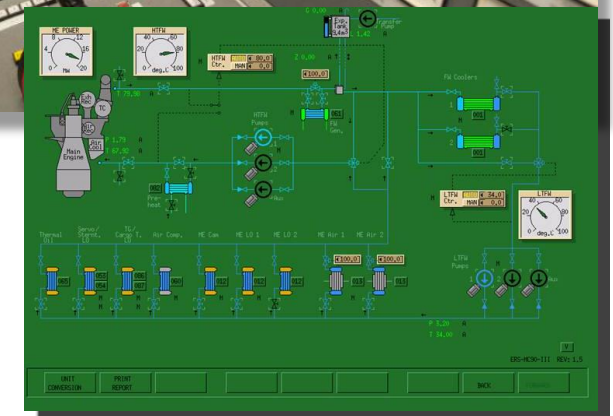
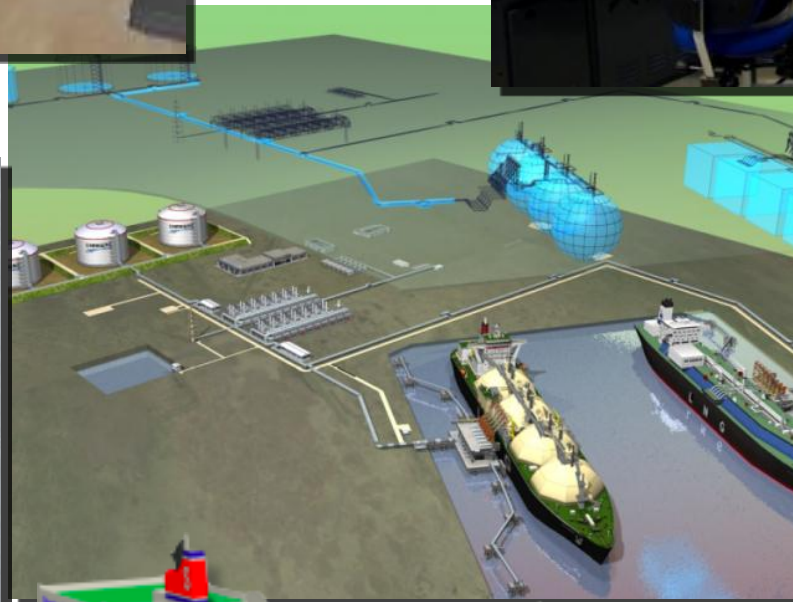
Safe
Ship

Eco
Ship

Business
Ship

This image cannot currently be displayed.

Advanced Simulation Centre





A Swedish initiative for sustainable harvesting
of renewable ocean energy

CHALMERS



www.chalmers.se/smt/oec-en

Contact: bjorn.sodahl@chalmers.se
+46 31 772 3463



Thank you for your attention!