

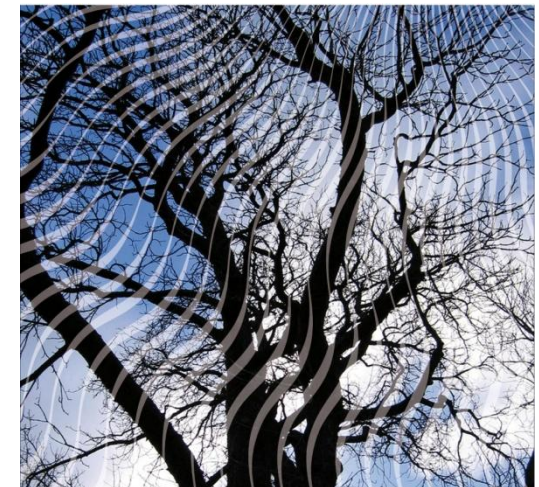
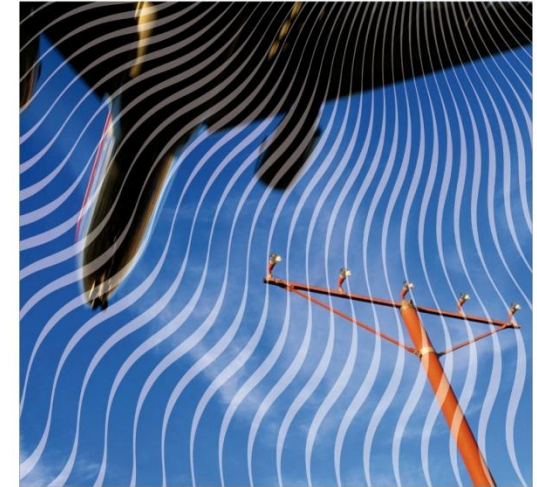
FP7 Maritime Transport Brokerage Event 2010

CONCEPTUAL KLT COMPANY PROFILE

September, 1st – 2nd London

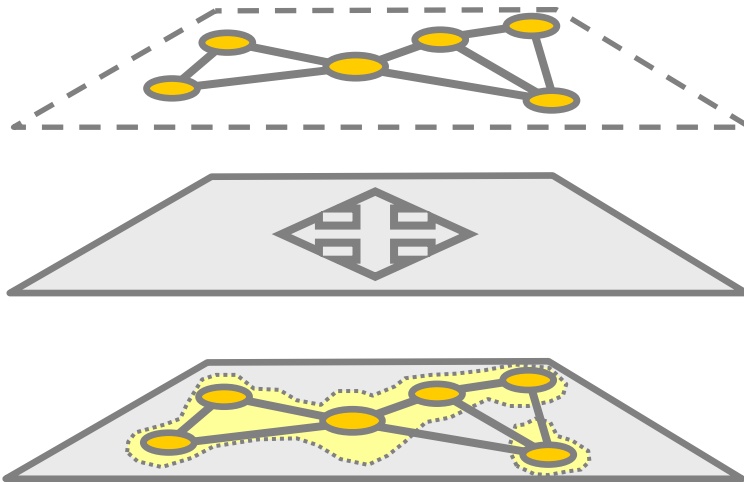
CONCEPTUAL KLT

- **CONCEPTUAL KLT** aim is the design and implementation of strategies in order to generate, transmit and apply the knowledge to organizations and institutions for their technological development, likewise R&D projects development related to logistics and transport activities.
- **CONCEPTUAL KLT** objective is the development of integrated projects in Knowledge Management, Transport and Logistics areas.
- **CONCEPTUAL KLT** is focused on technical consultancy to transport and logistics companies and institutions, as well as technological improvement of services and processes.



ACTIVITY LINES

- **CONCEPTUAL KLT** has **two main areas** of activity:
 - *Transport and Logistics*
 - *Knowledge Management*



with **three different services**:

- *Engineering*
- *Consultancy*
- *Project development*

CONCEPTUAL KLT. TRANSPORT AND LOGISTICS

- **CONCEPTUAL KLT** expertise is centered on the application of technology to transport multi-modal and co-modal complex systems by road, railway and sea, as well as on the interactions of these systems with ports infrastructure and logistics centers.

- **WE PROVIDE:**
 - Technologies for the analysis, planning and coordination of transport logistics and services, from origin to destination, by land and sea.

 - Technologies for the analysis, planning and optimization of inter-modality and co-modality in logistics processes.

 - Technical support to operations, and coordination of activities and resources, related to ports infrastructure.

MAIN PROJECTS. TRANSPORT AND LOGISTICS

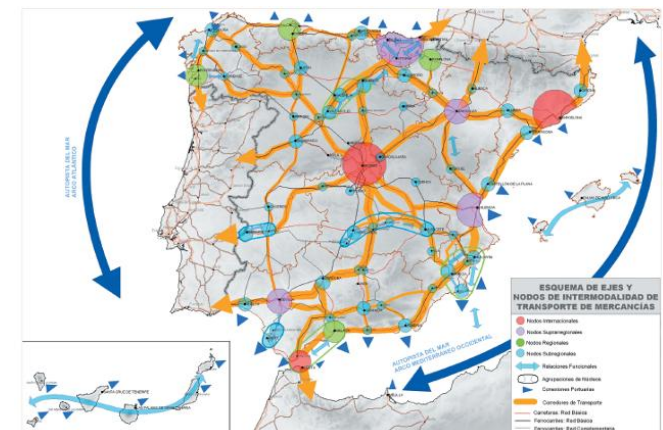
EcomodalUmlandPort

Project main objective

Specific tools development and logistics solutions for a better knowledge and improvement of hinterland-port communications, according to umland characteristics and limitations, and having in mind efficiency, sustainability and co-modality criteria.

Project main tasks

- Development of a complete data base of technical data (position, size, infrastructure connections, services) about all ports and logistics centers and operators in Spain.
- Development of a simulation tool for the optimal connection between logistics centers and ports, by road and by train.



MAIN PROJECTS. TRANSPORT AND LOGISTICS

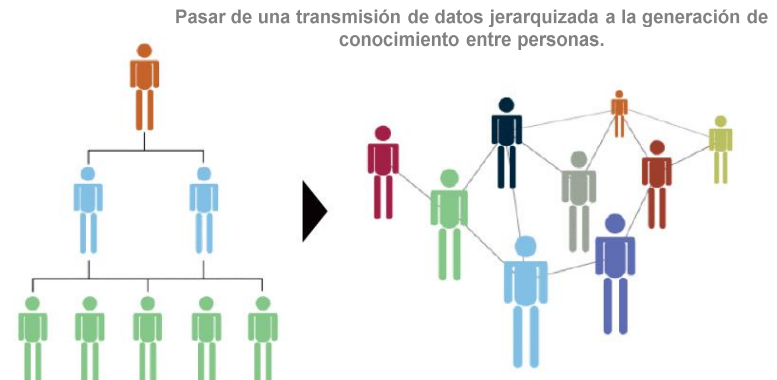
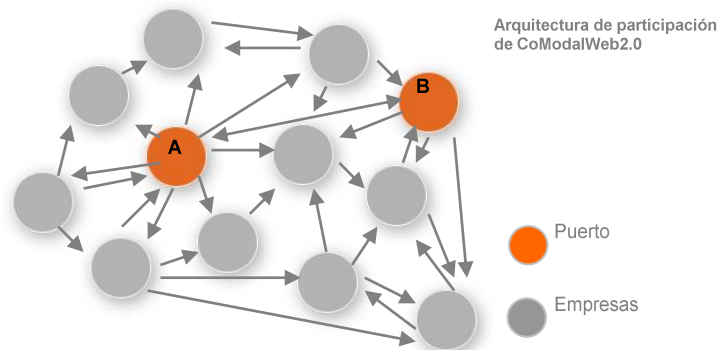
ComodalWeb2.0

Project main objective

Improvement of sea logistics co-modality (motorways of the sea). Port community Systems 2.0 design (E-Maritime, E-Services, Internet of Things).

Project main task

Development of a multi-agent, web 2.0 architecture, in order to increase collaboration between different port communities, and between port communities and final users, reducing administrative tasks.



MAIN PROJECTS. TRANSPORT AND LOGISTICS

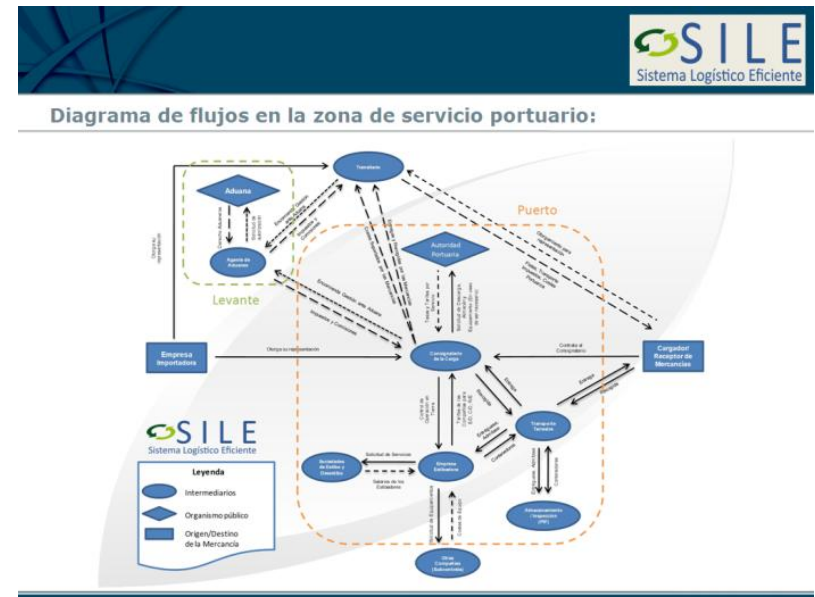
Efficient Logistics System In and Out of Ports (SILE)

Project main objective

Development of an efficient management system for freight transport by road between port installations and near located companies.

Project main tasks

- System development based on RFID technologies.
- Improvement of eco-efficiency parameters of the process



EUROPEAN PROJECTS

“Sustainable Knowledge Platform for the European Maritime and Logistics Industry” (SKEMA)

- FP7, DGTREN
- CONCEPTUAL KLT as a subcontractor of PORTEL company (spanish ports telematic services provider)



“Maritime Navigation and Information Services”(MARNIS)

- FP6
- CONCEPTUAL KLT as a subcontractor of PORTEL company (spanish ports telematic services provider)



CONCEPTUAL KLT FOCUS

AREA 7.2.2.1

SST.2011.2.1-1 Efficient interfaces between transport modes

AREA 7.2.5.2

SST.2011.5.2-1 Strengthening the European maritime transport sector competitiveness

SST.2011.5.2-3 Cost-effective modernization of the inland fleet for freight transport

SST.2011.5.2-4 Exploring and fostering international collaboration in the waterborne transport sector

7.2.8 The Ocean of Tomorrow

Ocean 2011.4 Knowledge-base and tools for regional networks of MPA's integrated management of activities together with assessment of wind energy potential in the Mediterranean and the Black Sea

CONTACT INFORMATION

Juan José González
jjgonzalez@conceptualklt.es