

CENTRUM TECHNIKI OKRĘTOWEJ S.A.

Ship Design and Research Centre S.A.



CTO S.A.

20



The essential mission of the CTO is to initiate and to support the maritime industry by the research-development, design and information activities.

Two Departments:

1. Research and Development Department:
 - **Ship Hydromechanics Division**
 - Structure Division
 - Environmental Laboratories Division
2. Design and Technology Department:

Research and development support programs:

- Ship building
- Yachts
- Off- shore
- Renewable energy
- Environmental engineering
- Medical engineering

Deep water tests:



Shallow water tests



Free sailing tests



Cavitation Tests

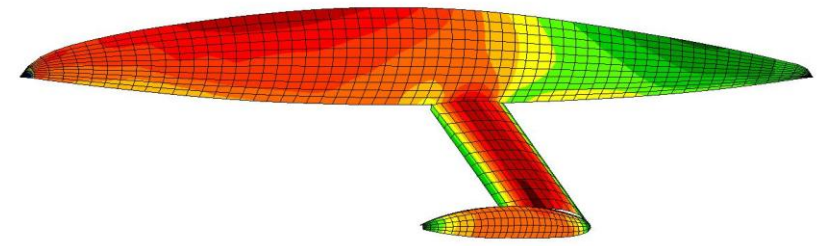
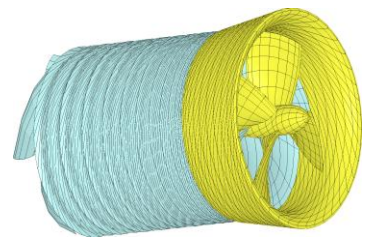
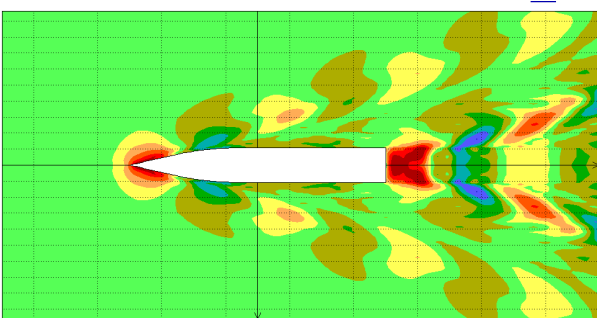
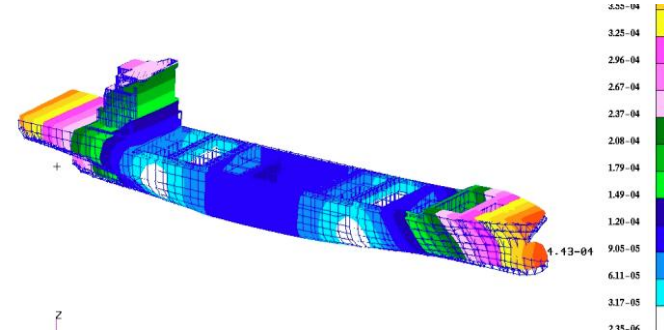
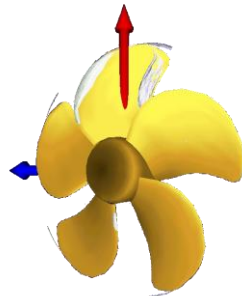
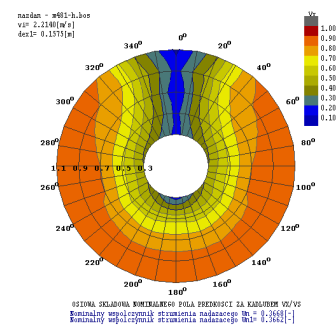
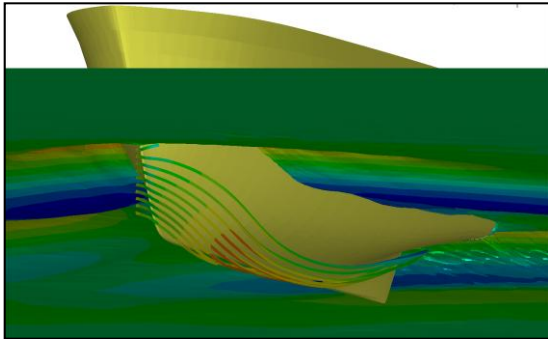


CTO is able to provide:

- Ship performance in calm water and in waves in different sea states
- Seakeeping of ships and other floating structures
- Ship manoeuvrability on towing tank and free sailing
- Cavitation model tests + acoustic measurements



•CAD tools\nnumerical analyses: CFD + FEM





CTO takes active role in European Union projects starting from 5th till 7th Framework Programme (ab. 30 projects).

and

International cooperation within:

ITTC (International Towing Tank Conference)

ISSC (International Ship and Offshore Structure Congress)

EFC (European Federation of Corrosion)

IMO (International Maritime Organization)

COREDES (Committee of Research and Development in European Shipbuilding)

WATERBORNE Technology Platform



Thank you for attention