



National Maritime College of Ireland and PARTNERS FP7 Brokerage Event, Sept 8th 2011

Contact:

Ms Gráinne Lynch, Research Development

National Maritime College of Ireland

Ringaskiddy, Cork

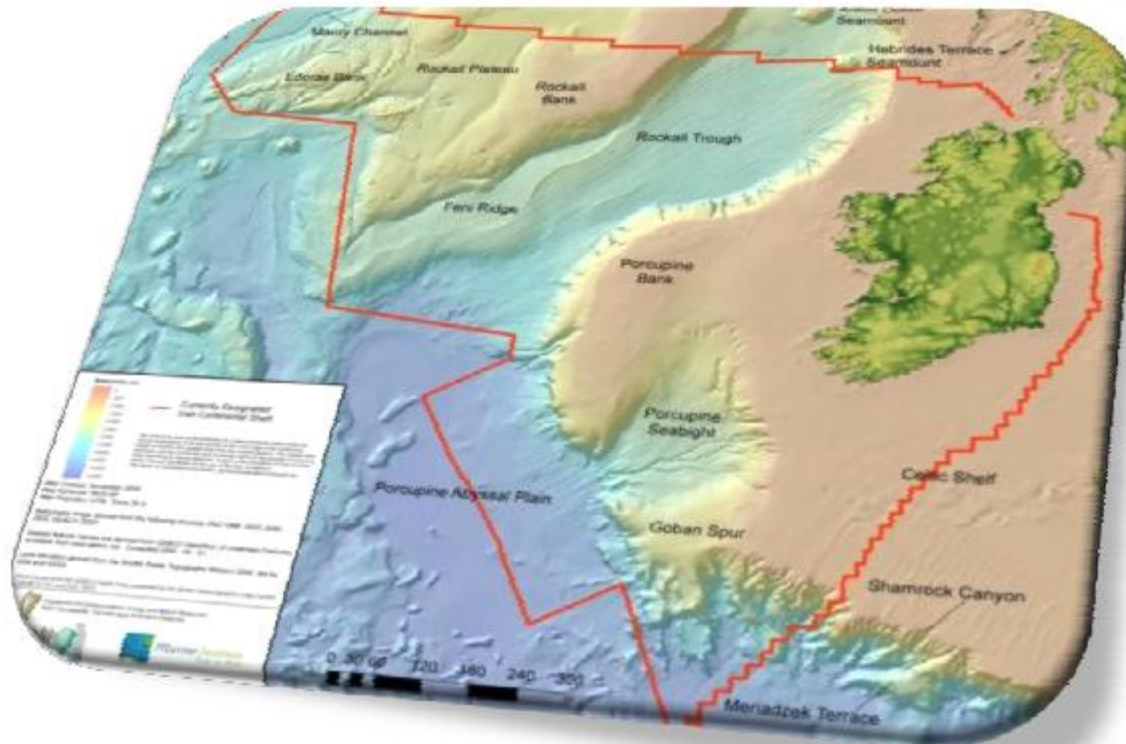
grainne.lynch@nmci.ie

The Opportunity

The Real Map of Ireland

Ireland's Exclusive Economic Zone

Ocean and coastal territories extending to over 9 times terrestrial area



Irish Maritime Energy and Resources Cluster

- **Cork Institute of Technology – *National Maritime College of Ireland*** – domain experts e.g. world’s largest suite of bridge simulators
- **Irish Naval Service** - *“to be the smartest, most innovative, responsive naval service provider in the world by 2016”*
- **University College Cork – Beaufort Laboratory** – Worlds largest marine renewable energy research centre
 - Hydraulics and Maritime Research Centre
 - Coastal & Marine Resources Centre
 - Sustainable Energy Research Group





MARINE ENERGY



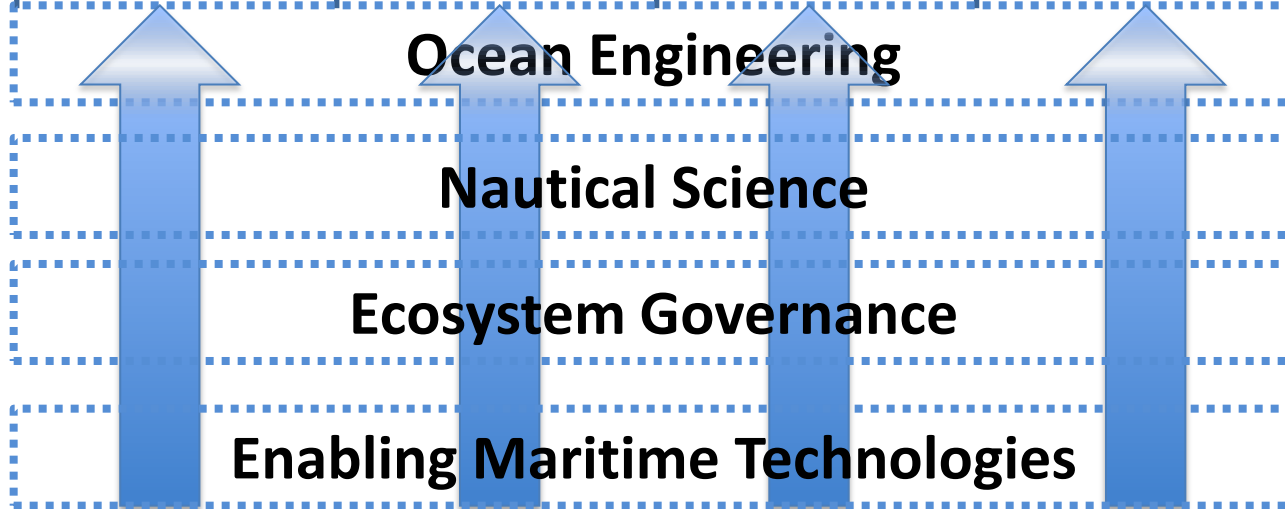
SHIPPING,
LOGISTICS,
TRANSPORT



MARITIME
SECURITY &
SAFETY



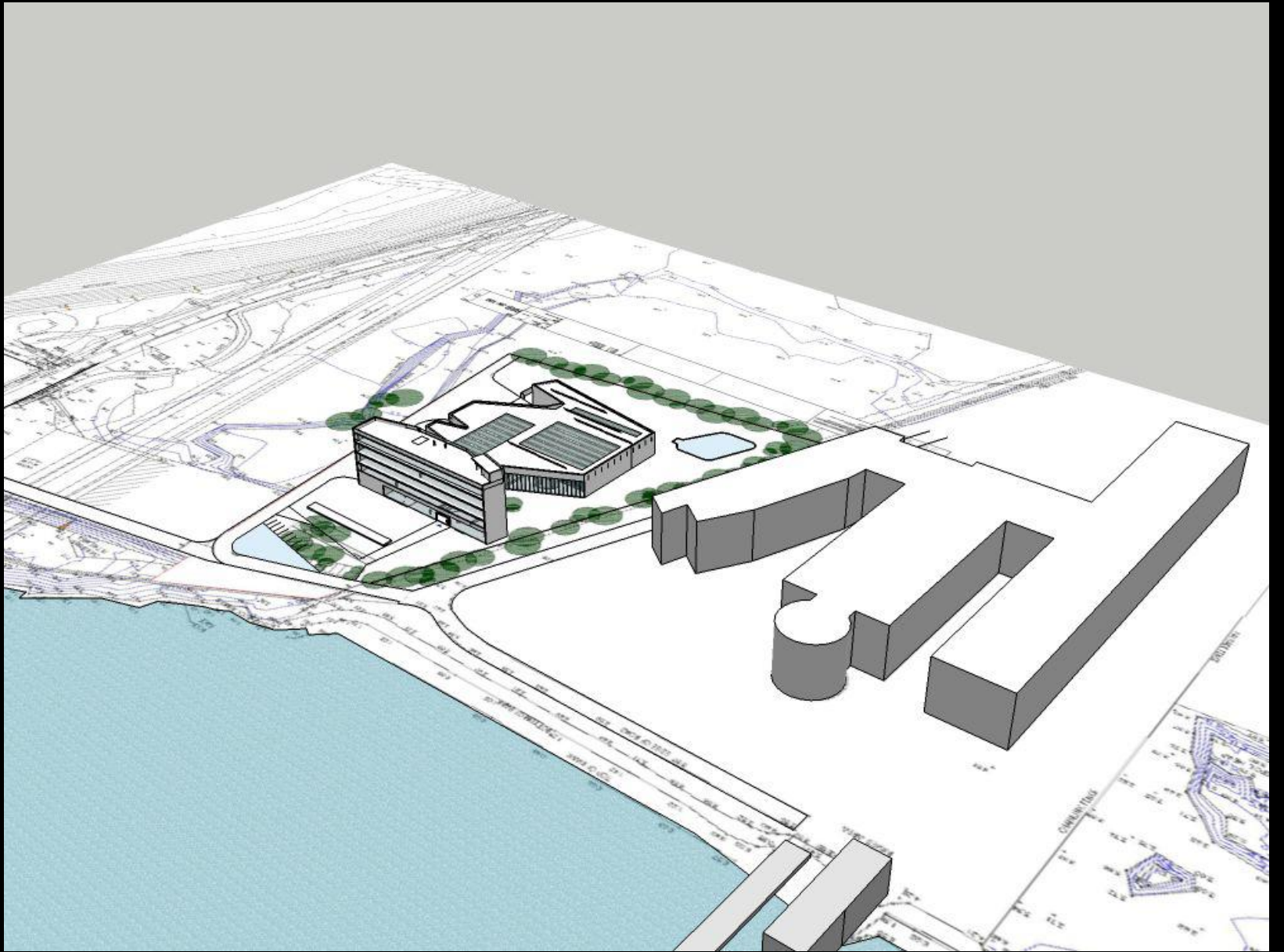
MARINE
RECREATION

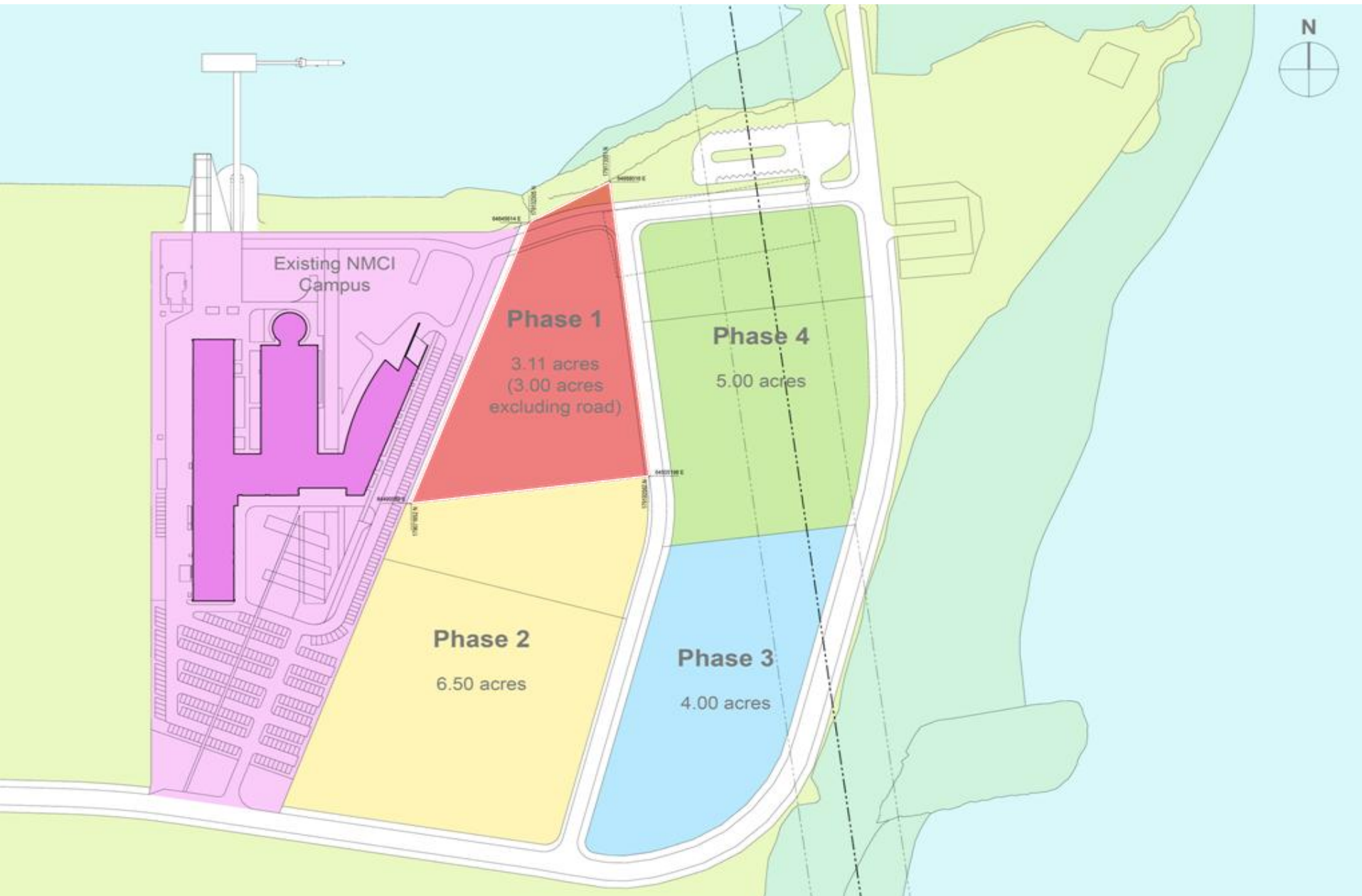


Balancing fundamental with applied and industry led research
MERC focus – Innovation & Commercialisation

IMERC Network







Campus master plan

Atlantic Gateway:
Artists Drawing



Atlantic Gateway

Maritime
College

Naval Base



Calls of interest

- SST
 - Human element factors
 - e-Guided vessels
 - Noise detection and abatement
- TPT
 - Mitigating effect extreme weather on transport system
- SEC
 - Trustworthiness of vessel traffic reporting
 - Unmanned Aerial Systems for Recognised Maritime Picture
- Regions of Knowledge - marine renewables
- Other
 - Ballast water on ships – Detection of invasive species
 - Marine Mammal Observation
 - Sensors on robot fish

Further Information

www.nmci.ie
www.merc3.ie

Contact: Gráinne Lynch, Research Development,
National Maritime College of Ireland, Ringaskiddy, Cork

grainne.lynch@nmci.ie
+353 21 433 5716



UCC

Coláiste na hOllscoile Corcaigh, Éire
University College Cork, Ireland



Institiúid Teicneolaíochta Chorcaí
Cork Institute of Technology



NMCI
National Maritime College of Ireland
Coláiste Náisiúnta Móra sa tÉire

Coastal & Marine Resources Centre
Ionad Acmhainní Cósta is Mara



HMRC
HYDRAULICS & MARITIME RESEARCH CENTRE

 **SERG**
Sustainable Energy Research Group