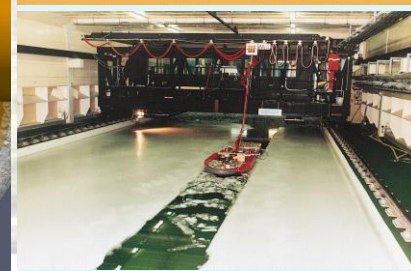
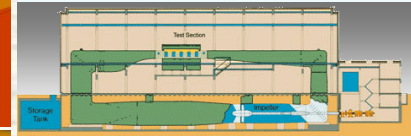
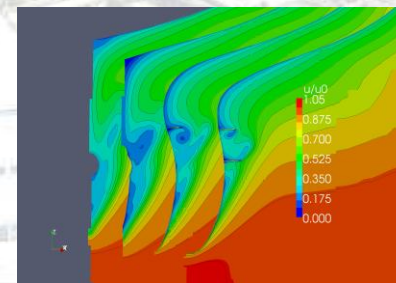
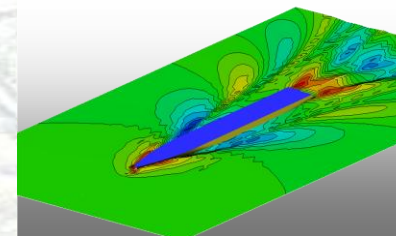


HSVA – Hamburgische Schiffbau Versuchsanstalt GmbH

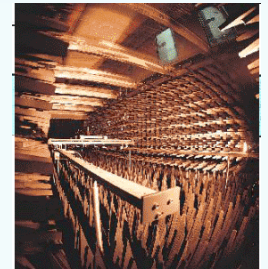
- Hydrodynamic research and customer services since 1913.
- Private, self supporting model basin.
- 23 shareholders;
- 85 employees;
- Industry share abt. 80%
- Research:
 - EU framework programmes
 - National programmes (D)
- Main facilities:
 - Large towing tank (300 m)
 - Manoeuvring (CPMC)
 - Large Cavitation tank (test section: 2.80 x 1.60 x 11.00 meters), $v = 12.6$ m/s
 - Ice tank
- CFD developments:
 - Potential flow solvers: *ν -Shallo*
 - RANS: *FreSCo*
 - Propeller codes and others
- CFD and applications:
 - Resistance and propulsion
 - Cavitation
 - Manoeuvring



HSVA Research Interests

FP 7/5

- Acoustic – noise impact of maritime transportation (SST2012.1.1-1);
- Safety of Ships in Arctic Conditions (SST2012.4.1-2).



Thematic interests

- Hydrodynamics / Ship Dynamics.
- Energy Efficiency.
- Safety analysis.

